

## 4000 QM

### EXTERIOR COLLECTION

# Duralex

## 4000 QM

Duralex 4000 QM offers excellent heat protection used as external Zipcover. The glare control is also excellent because of the twill weave design but depends at the same time of the selected colour. (Tv values go below 5% while selecting a dark color.) Duralex has a nice transparency, that offers a clear view to the outside.

Conclusion: an excellent choice for your high performance external blind system!

We offer this fabric in a variety of different economical widths: 250-275-300 cm.

4000 QM 01  
white uni

4000 QM 02  
white - pearl

4000 QM 06  
pearl uni

4000 QM 07  
pearl - grey

4000 QM 08  
grey - white

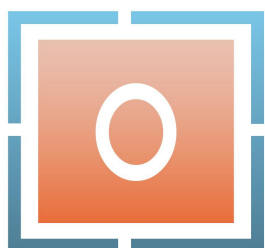
4000 QM 10  
grey uni

4000 QM 11  
grey - coal

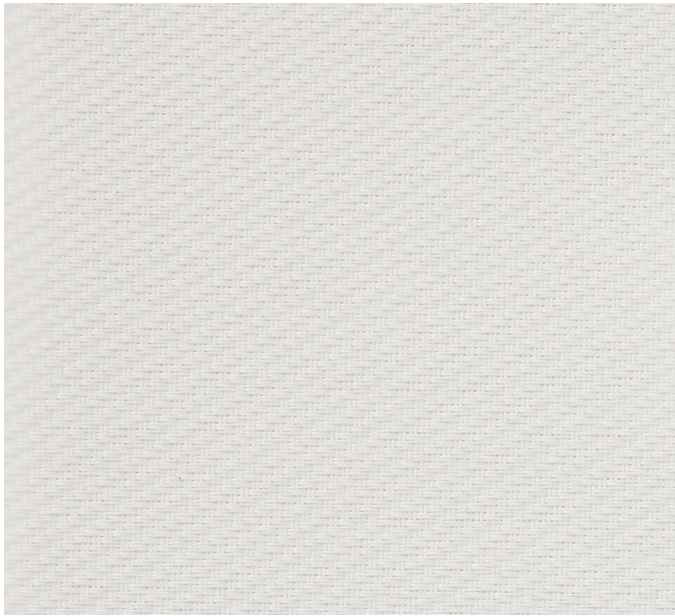
4000 QM 13  
coal uni

4000 QM 16  
stormy grey uni

4000 QM 17  
deep black uni



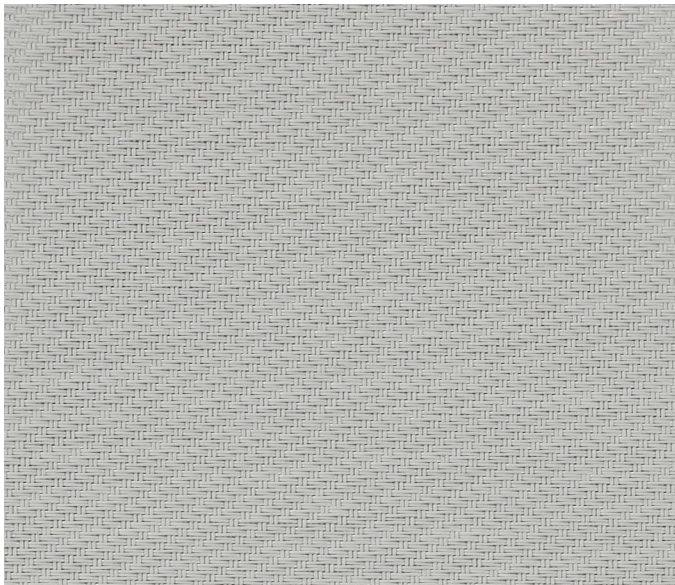
**ORION-MENUISERIES**  
UN MONDE D'OUVERTURE



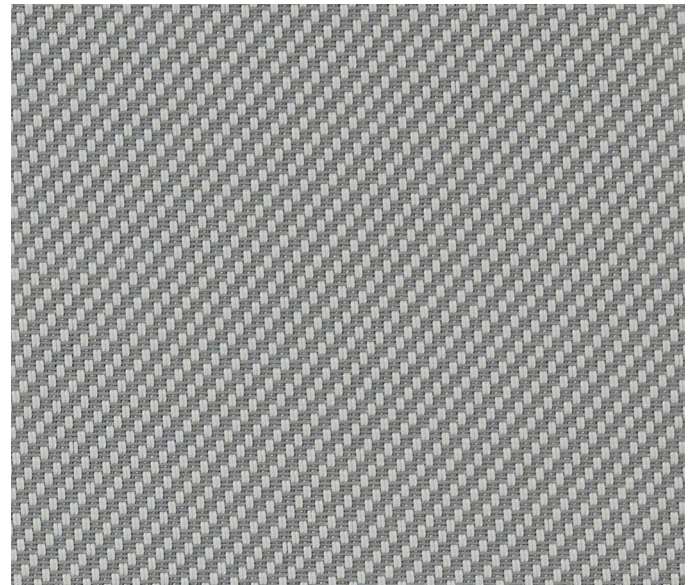
**Duralex 4000 - QM01 Blanc Uni**



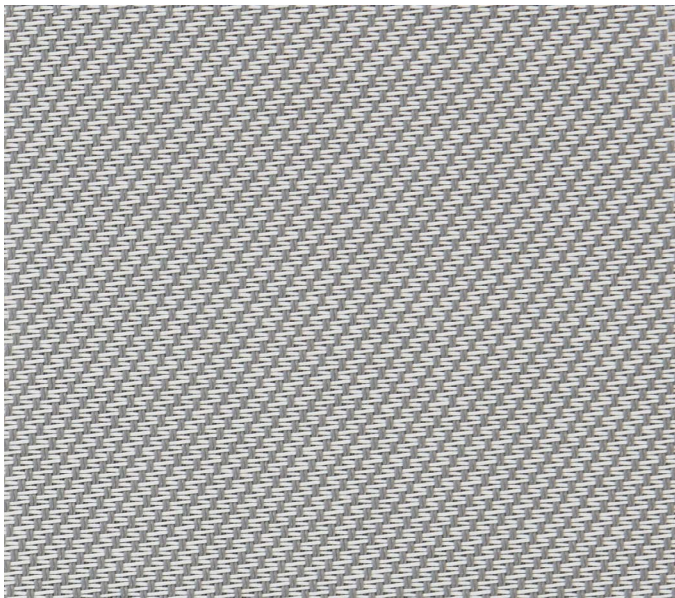
**Duralex 4000 - QM02 Blanc Perle**



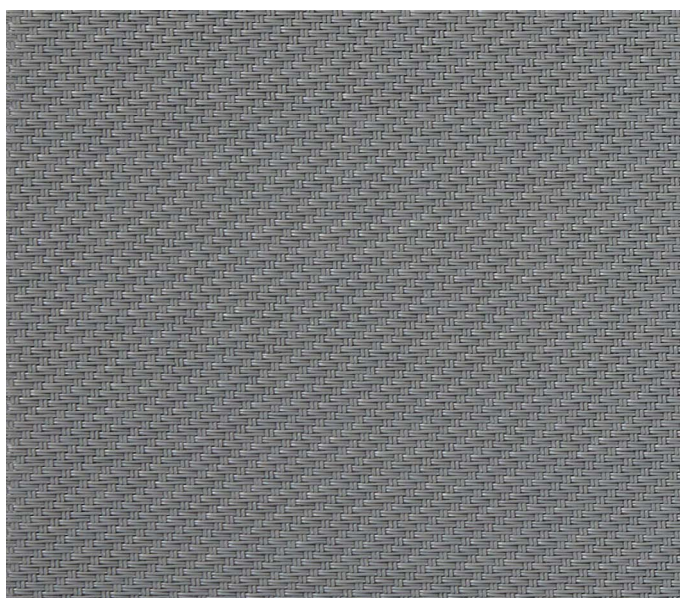
**Duralex 4000 - QM06 Perle**



**Duralex 4000 - QM07 Perle Gris**



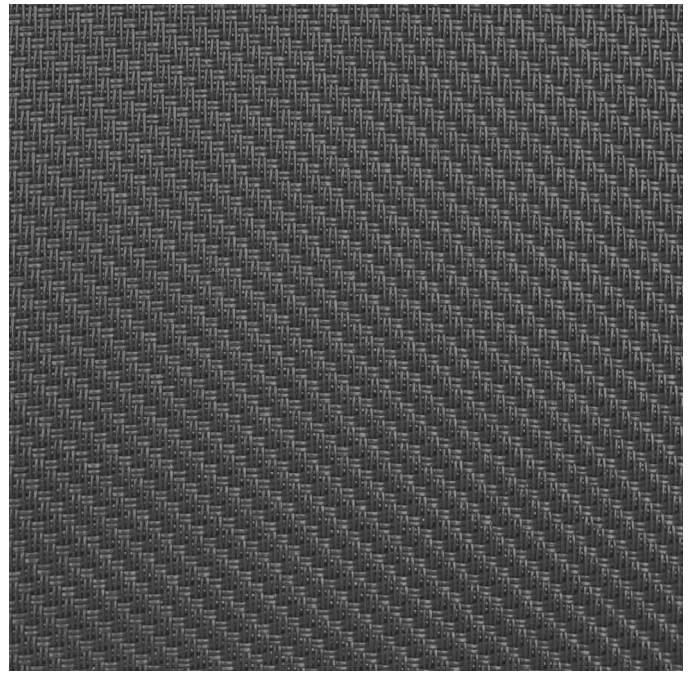
**Duralex 4000 - QM08 Gris Blanc**



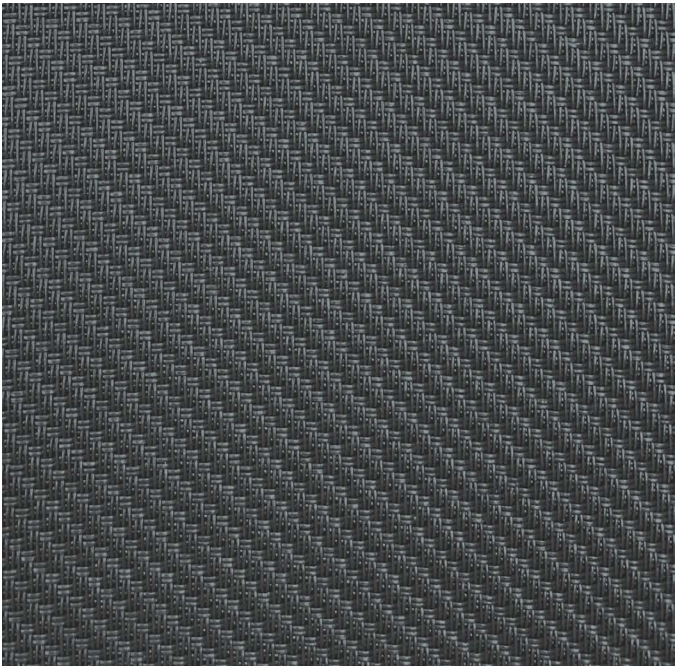
**Duralex 4000 - QM10 Gris**



Duralex 4000 - QM11 Gris Charbon



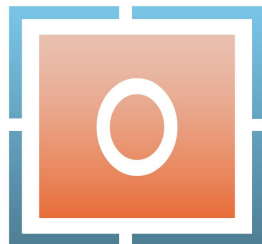
Duralex 4000 - QM13 Charbon



Duralex 4000 - QM16 Gris Anthracite

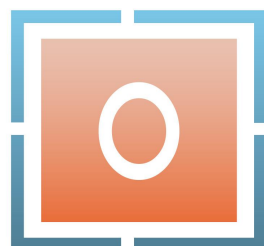
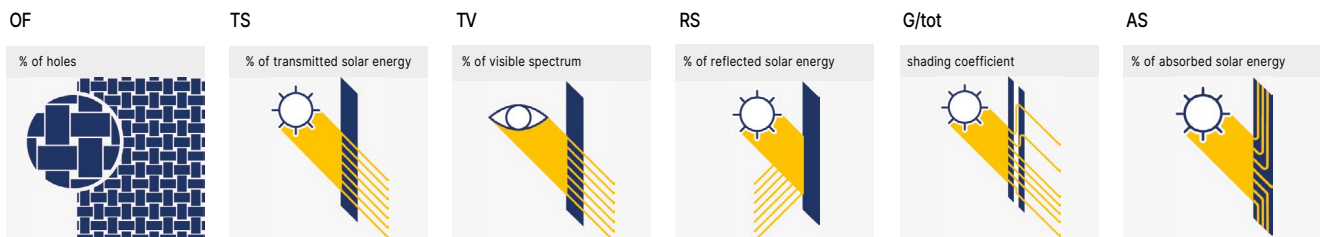


Duralex 4000 - QM17 Noir Profond



**ORION-MENUISERIES**  
UN MONDE D'OUVERTURE

Ref.	Ts	Rs	As	Tv	Rv	Av	Tuv	Double glazing with low emission degree and argon interspace	
								U <sub>g</sub> =1,2 W/(m²K) g=0,59	
								g <sub>tot</sub>	F <sub>c</sub>
QM 01	18,1%	66,2%	15,7%	15,2%	76,2%	8,6%	4,9%	0,13	0,23
QM 02 front	12,8%	56,1%	31,1%	9,7%	63,7%	26,6%	4,5%	0,11	0,19
QM 02 back	12,8%	48,7%	38,5%	9,7%	54,2%	36,1%	4,5%	0,12	0,20
QM 06	10,1%	34,9%	55,0%	7,3%	36,9%	55,8%	5,0%	0,12	0,20
QM 07 front	7,6%	29,1%	63,3%	5,8%	30,9%	63,3%	4,3%	0,11	0,18
QM 07 back	7,6%	24,7%	67,7%	5,8%	26,2%	68,0%	4,3%	0,11	0,19
QM 08 front	7,8%	36,9%	55,3%	6,3%	41,7%	52,0%	4,8%	0,10	0,17
QM 08 back	7,8%	27,2%	65,0%	6,3%	30,1%	63,6%	4,8%	0,11	0,19
QM 10	6,0%	16,4%	77,6%	5,0%	16,7%	78,3%	4,7%	0,11	0,18
QM 11 front	5,7%	13,3%	81,0%	5,1%	13,6%	81,3%	4,8%	0,11	0,19
QM 11 back	5,7%	10,5%	83,8%	5,1%	10,7%	84,2%	4,8%	0,11	0,19
QM 13	4,4%	5,6%	90,0%	4,3%	5,7%	90,0%	4,3%	0,11	0,18
QM 16	4,7%	6,7%	88,6%	4,4%	6,5%	89,1%	4,4%	0,11	0,19
QM 17	4,7%	3,6%	91,7%	4,6%	3,5%	91,9%	4,7%	0,11	0,19



# 4000 QM

## Technical properties

Technical specifications	Average Values	5%	Standard	
Composition	Fiberglass 20%		ISO 1833-1	
	PVC 80%			
Weight(/sqm)	556gram ± 5%		ISO 3081	
Thickness	0.83mm ± 5%		ISO 5084	
Fabric count (sq.inch)	50 ends X 35 picks		ISO 7211/2	
Tensile strength (daN/5cm)	201.4 Warp / 141.0 Weft ± 5%		ISO 1421/1	
Tearing strength (daN)	7.1 Warp / 6.5 Weft ± 5%		ISO 4674	
Colorfastness to light	Grade 7-8		ISO 105 B02	
Fire resistance	C s3, d0	B2	EN13501-01(EU)	DIN 4102(DE)
	M1	FR	NF P92-503(FR)	NFPA 701 (US)
Environment	OEKO-TEX Standard 100			
	GREENGUARD			
Standard width	( 200cm ) - 250cm - 275cm - 300cm			
Standard length	30 meter / roll			
Cutting	best result with crush cutting			
Welding	thermal, HF, ultrasonic, sewing			
Cleaning	remove dust from the fabric surface, then wipe gently			
	with a humind soft sponge while using a mild detergent			

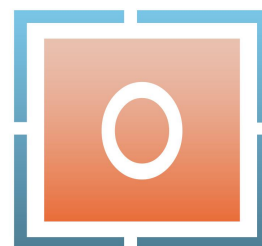
## Light performances

Classification EN 14501 (2021-09)

Code	glare control	privacy night	sight contact with the outside	daylight utilisation
QM 01	0	2	1	2
QM 02	1	2	1	1
QM 06	1	2	2	1
QM 07	1	2	2	1
QM 08	1	2	2	1
QM 10	1	2	2	1
QM 11	1	2	2	1
QM 13	1	2	2	1
QM 16	1	2	2	1
QM 17	1	2	2	1

Influence on visual comfort					
Class	0	1	2	3	4
	very small effect	small effect	moderate effect	high effect	very high effect

All data are purely indicative and non contractual



**ORION-MENUISERIES**  
UN MONDE D'OUVERTURE

## Eco & conformity labels

FIVE YEAR WARRANTY



FIRE RETARDANT



ANTI-BACTERIAL



LEAD FREE



**OEKO-TEX®**  
CONFIDENCE IN TEXTILES  
**STANDARD 100**  
1905063 Centexbel  
Tested for harmful substances.  
[www.oeko-tex.com/standard100](http://www.oeko-tex.com/standard100)